



# Our mission is simple:

## ***Helping utilities tackle PFAS quickly and cost-effectively***

### **Custom PFAS Treatment Systems**

*Sentinel works with design engineers on all aspects of the system, with a focus on CAPEX, OPEX, and functionality. Pumps, pretreatment, pressure vessels, and even the enclosure are selected with site-specific conditions in mind. Our innovative approach combines traditional technologies with patent-pending ones. This unique design approach helps utilities tackle PFAS quickly and cost-effectively. Your goals become Sentinel's goals!*



#### **Convenient Operating Choices**

- **Unique operating models**
  - Sentinel can operate for you
  - Sentinel can train your team to operate



#### **Rapid Deployment & Mobile Solutions**

- **On-Demand compliance**
  - Rent, lease, or purchase
  - Weatherized valve tree, trailer, & container options
  - Turnkey install available



#### **Full Scale PFAS Treatment**

- **Custom tailored packages**
  - Lease or purchase options
  - Turnkey install available

- Pilot Skid Sales & Rental
- Turnkey Testing Services
- Proprietary RLSCT Method

#### **Modeling & Pilot Testing**

#### **Custom System Design**

- Novel Arrangements
- Highly Configurable
- OPEX Efficiency

#### **Regen & Disposal**

#### **Media Services**

- Risk Mitigation
- Stock Management
- Small Site Regen Services

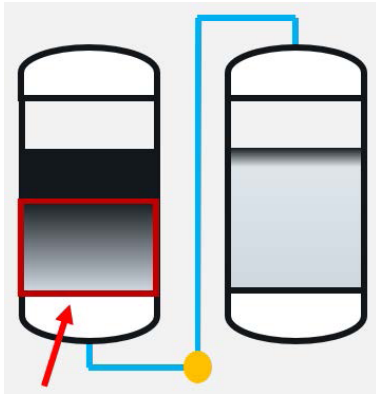
- Media Exchanges
- Full Vessel Swaps
- Backwash Management

# O&M Reimagined



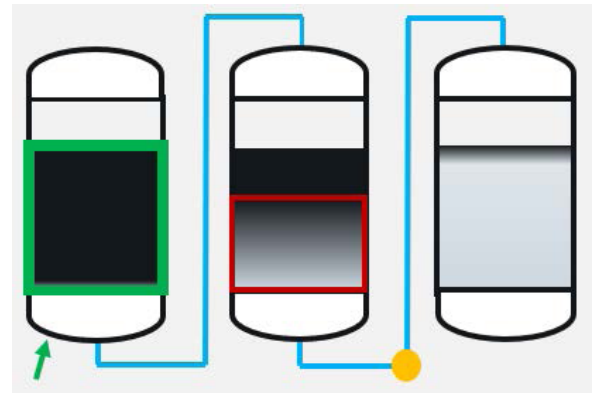
## Managing the PFAS MTZ

### Traditional Configuration



Unused media that will be discarded due to MTZ progression, causing breakthrough between lead/lag vessels before media is exhausted.

### Patent-Pending Roughing Filter Configuration



Adding additional vessels in front of the sample point allows the MTZ progression to move through the bed of the first filter and into the second without triggering a media swap. This allows the first bed more operational time, driving it closer to exhaustion.

## MURMAX & Steel Vessel Swaps



- Sentinel can perform full vessel swaps when MCL is triggered
- Limits downtime
- Reduces site disruption
- Reduces backwash volume
- MURMAX vessel swaps up to 30"
- Steel vessel swaps up to 48"

[www.sentinel-h2o.com](http://www.sentinel-h2o.com) | 888-811-PFAS  
[sales@sentinel-h2o.com](mailto:sales@sentinel-h2o.com)

*Call before you treat*

